

WAAS CH 40320 W24A	APP CRS 238°	Rwy Idg THRE Apt Elev	5399 8 9
--	------------------------	-----------------------------	-------------------------------------

RNAV (GPS) RWY 24

PATTERSON/ HARRY P. WILLIAMS MEMORIAL (PTN)

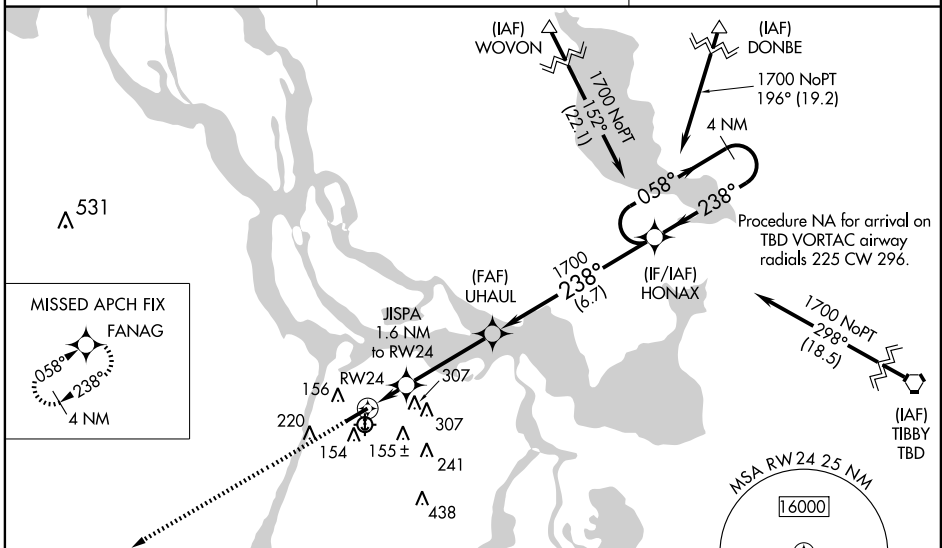
⚠ Baro-VNAV NA when using New Iberia altimeter setting. For uncompensated Baro-VNAV systems, LNAV/VNAV NA below -15°C (5°F) or above 54°C (130°F). DME/DME RNP-0.3 NA. VDP NA when using New Iberia altimeter setting. When local altimeter setting not received, use New Iberia altimeter setting and increase all DA 82 feet and all MDA 100 feet; increase LNAV/VNAV all Cats visibility 1/8 mile, LNAV Cat C and Circling Cat C visibility 1/4 mile. For inoperative MALS, when using New Iberia altimeter setting, increase LPV all Cats visibility to 3/8 mile, LNAV/VNAV all Cats visibility to 1/8 mile, and LNAV Cat C visibility to 1/8 mile. When VGSI inoperative, Circling Rwy 6 NA at night.



MALS
R
AS

MISSED APPROACH:
Climb to 2000 direct FANAG and hold.

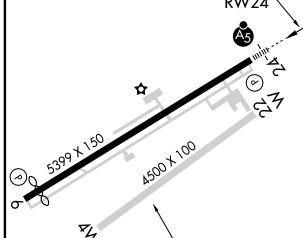
AWOS-3 134.575	NEW ORLEANS APP CON 124.3 256.9	UNICOM 122.8 (CTAF)
--------------------------	---	-------------------------------



SC-4, 18 OCT 2012 to 15 NOV 2012

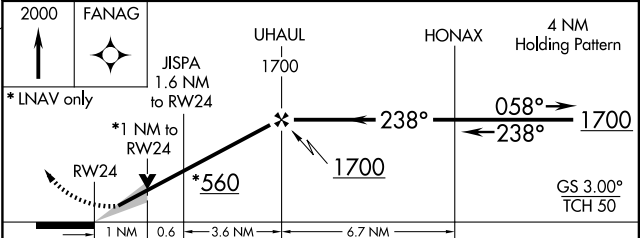
SC-4, 18 OCT 2012 to 15 NOV 2012

ELEV 9	THRE 8
--------	--------



CAUTION: Seaplane Slip

REIL Rwy 6	MIRL Rwy 6-24
------------	---------------



CATEGORY	A	B	C	D
LPV DA	208-1/2	200 (200-1/2)		NA
LNAV/VNAV DA	258-1/2	250 (300-1/2)		NA
LNAV MDA	360-1/2	352 (400-1/2)	360-5/8 352 (400-5/8)	NA
CIRCLING	520-1 511 (600-1)	580-1 571 (600-1)	620-1 3/4 611 (700-1 3/4)	NA