

LOC/DME I-PTN <b>108.3</b> Chan 20	APP CRS <b>238°</b>	Rwy ldg THRE Apt Elev	<b>5399</b> <b>8</b> <b>9</b>
------------------------------------------	------------------------	-----------------------------	-------------------------------------

# ILS or LOC/DME RWY 24

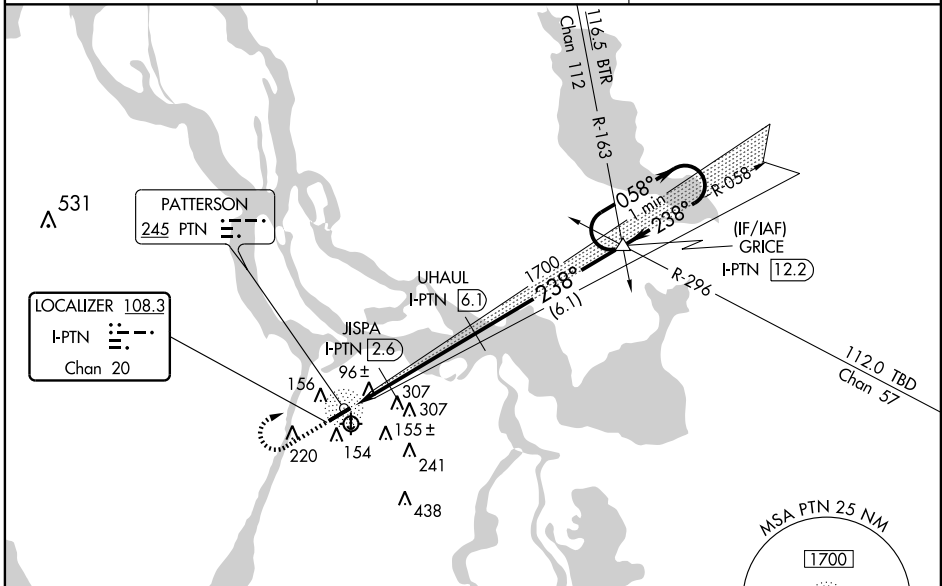
PATTERSON/ HARRY P. WILLIAMS MEMORIAL (PTN)

**NA** When local altimeter setting not received, use New Iberia altimeter setting and increase all DA 82 feet and all MDA 100 feet; increase S-LOC 24 Cat C visibility ¼ mile and Circling Cat C visibility ½ mile. For inoperative MALS when using New Iberia altimeter setting; increase S-ILS 24 all Cats visibility to ¾ mile and S-LOC 24 Cat C visibility to 1 ¾ mile. VDP NA when using New Iberia altimeter setting. When VGSI inop, Circling Rwy 6 NA at night.



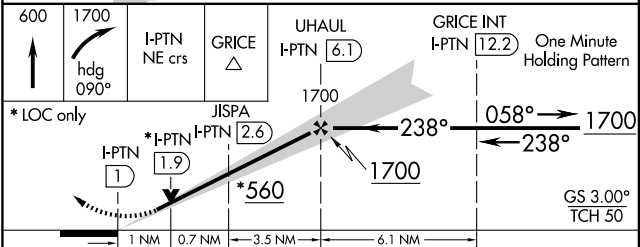
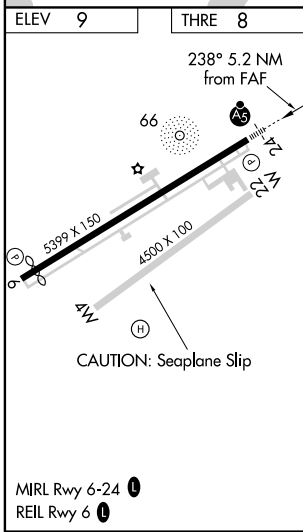
**MISSED APPROACH:** Climb to 600 then climbing right turn to 1700 on heading 090° and I-PTN NE course to GRICE Int/ I-PTN 12.2 DME and hold.

AWOS-3 <b>134.575</b>	NEW ORLEANS APP CON <b>124.3 256.9</b>	UNICOM <b>122.8 (CTAF) 0</b>
--------------------------	-------------------------------------------	---------------------------------



SC-4, 18 OCT 2012 to 15 NOV 2012

SC-4, 18 OCT 2012 to 15 NOV 2012



CATEGORY	A	B	C	D
S-ILS 24	208-½   200 (200-½)			NA
S-LOC 24	360-½	352 (400-½)	360-5/8   352 (400-5/8)	NA
CIRCLING	520-1   511 (600-1)	580-1   571 (600-1)	660-1 ¾   651 (700-1 ¾)	NA