

RNAV (GPS) RWY 6

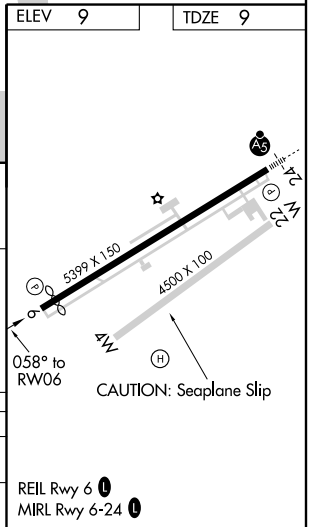
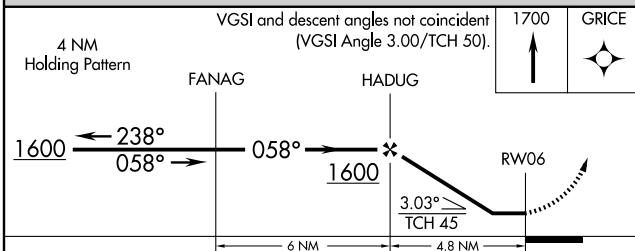
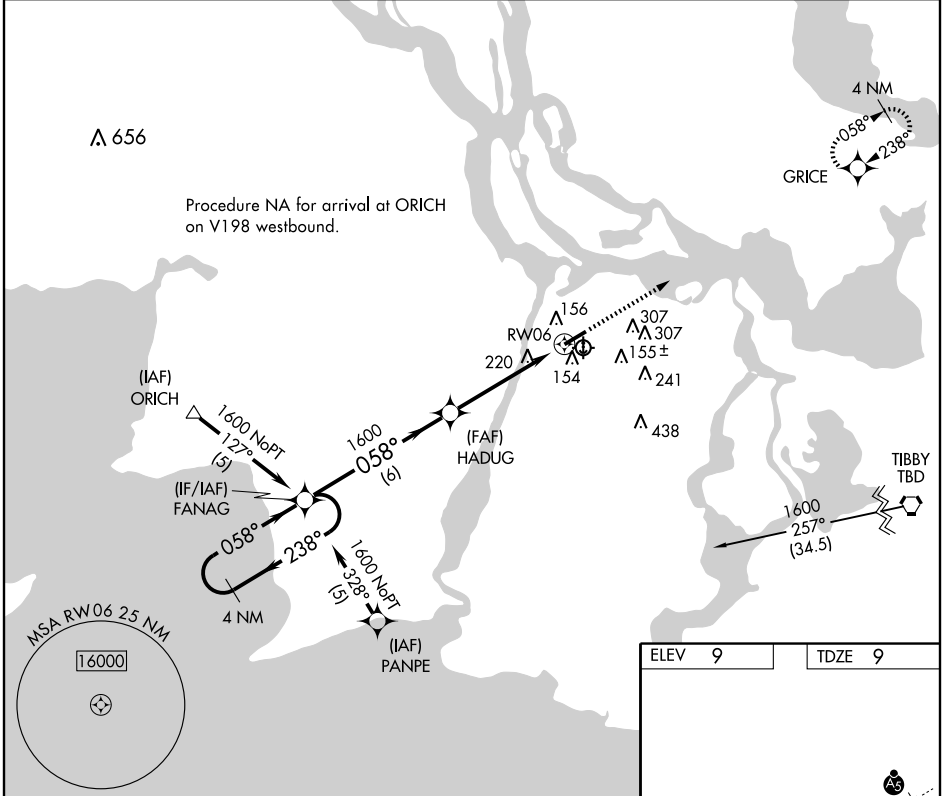
PATTERSON/ HARRY P. WILLIAMS MEMORIAL (PTN)

APP CRS 058°	Rwy Idg TDZE Apt Elev	5005 9 9
------------------------	-----------------------------	-------------------------------------

▽ GPS or RNP-0.3 required. DME/DME RNP-0.3 NA.
▲ NA When VGSI inoperative, straight-in/circling Rwy 6 procedure NA at night.

MISSED APPROACH: Climb to 1700 direct GRICE WP and hold.

AWOS-3 134.575	NEW ORLEANS APP CON 124.3 256.9	UNICOM 122.8 (CTAF) 0
--------------------------	---	---------------------------------



CATEGORY	A	B	C	D
LNVA MDA	540-1	531 (600-1)	540-1½ 531 (600-1½)	NA
CIRCLING	540-1 531 (600-1)	580-1 571 (600-1)	620-1¾ 611 (700-1¾)	NA

RNAV (GPS) RWY 6

SC-4, 18 OCT 2012 to 15 NOV 2012

SC-4, 18 OCT 2012 to 15 NOV 2012